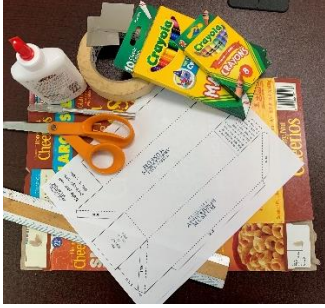


Make Your Own MAFM Periscope!



Materials

Large cereal box or poster board

2 mirrors (1 ¾ in x 1 ¾ in)

Glue stick or glue

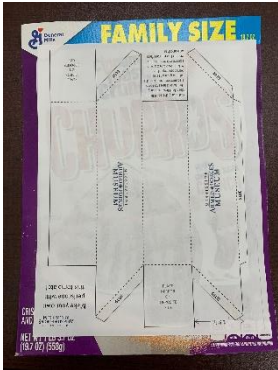
Tape, preferably masking tape

Scissors

Box cutter or craft knife (with adult assistance)

Ruler

Printed PDF Periscope template ([web address here](#))



Directions

1. Print off the periscope template ([web address here](#)) and glue it to the cereal box or poster board.

*Pro tip- wait about 10 minutes for the glue to dry between the template and cereal box. This will make the cutting process easier to manage and the edges clean.



2. Once the glue has dried carefully cut along the solid lines of the template, careful not to cut off the end flaps.

3. Using the ruler as a guide, ask an adult to score down the dashed lines with a craft knife. This will make it easier to fold.

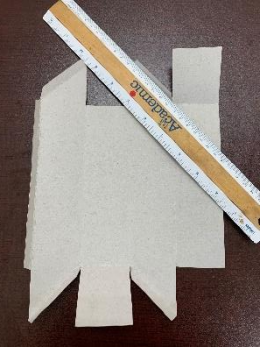
*Pro tip- When scoring the template don't cut all the way through, apply just enough pressure to make groove or line with the craft knife.



4. Fold all the scored lines inwards. Folding over a ruler will help keep the lines straight.



5. Continue folding the template to make a tube, glue and secure with masking tape if needed.



6. Glue the flaps at the end of the periscope down.

7. Glue and insert mirrors at each end of the periscope.

8. The edge of the periscope can sometimes end up looking a little untidy in the places where you scored it. You can tidy them up a bit with masking tape if you like.



9. Get creative! Do you want your periscope to blend in with its surroundings or stand out in a crowd? It's all up to you!



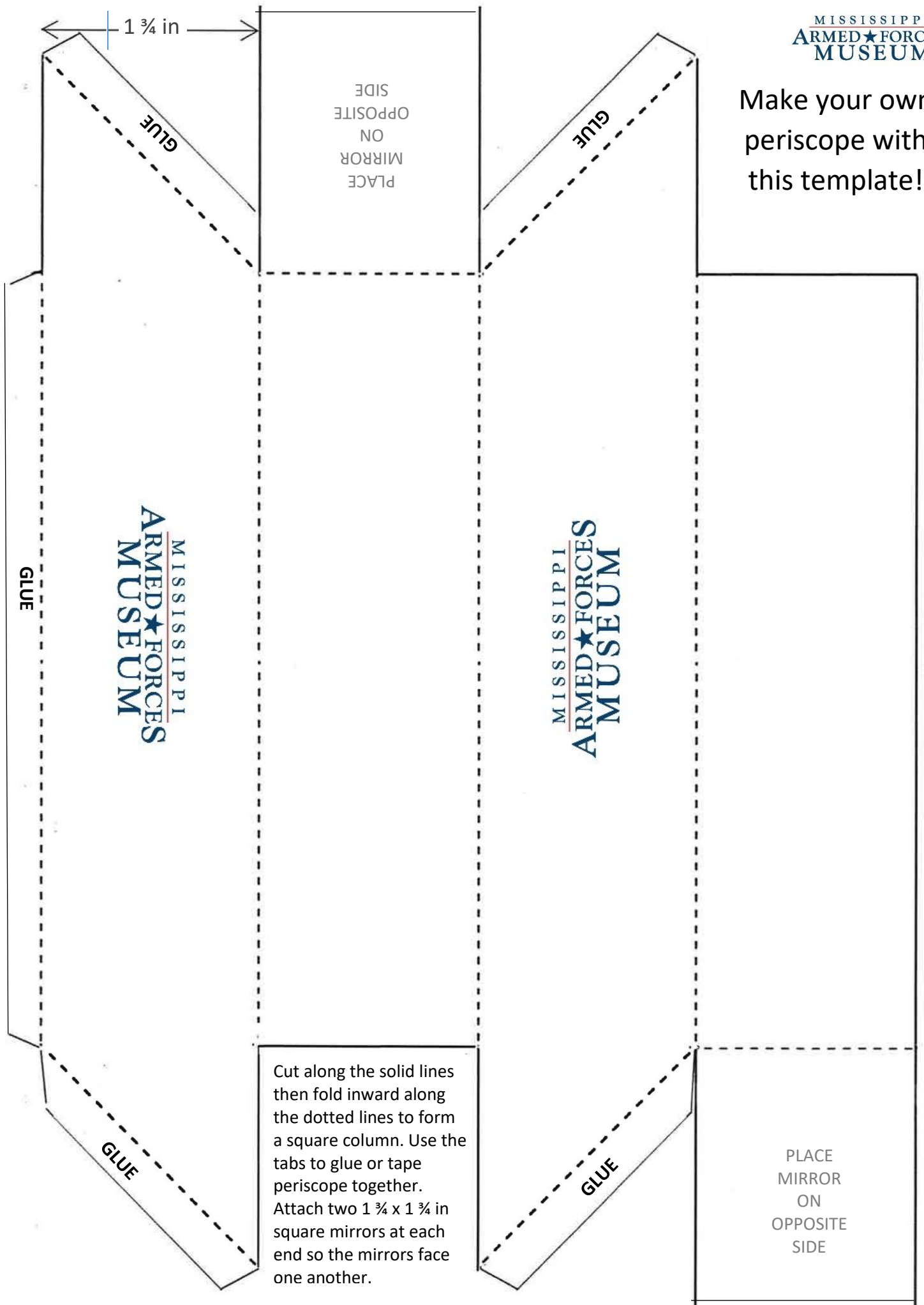
10. Try it out! Peep around corners or over a fence!

11. Share your MAFM Periscope with us!

@MAFMUSEUM



Make your own
periscope with
this template!



Cut along the solid lines then fold inward along the dotted lines to form a square column. Use the tabs to glue or tape periscope together. Attach two 1 3/4 x 1 3/4 in square mirrors at each end so the mirrors face one another.

PLACE
MIRROR
ON
OPPOSITE
SIDE